

REIDIN-GYODER NEW HOME PRICE INDEX SUPPORTED BY İŞBANK
JUNE 2016 RESULTS

Issue: 67

INDEX SUMMARY

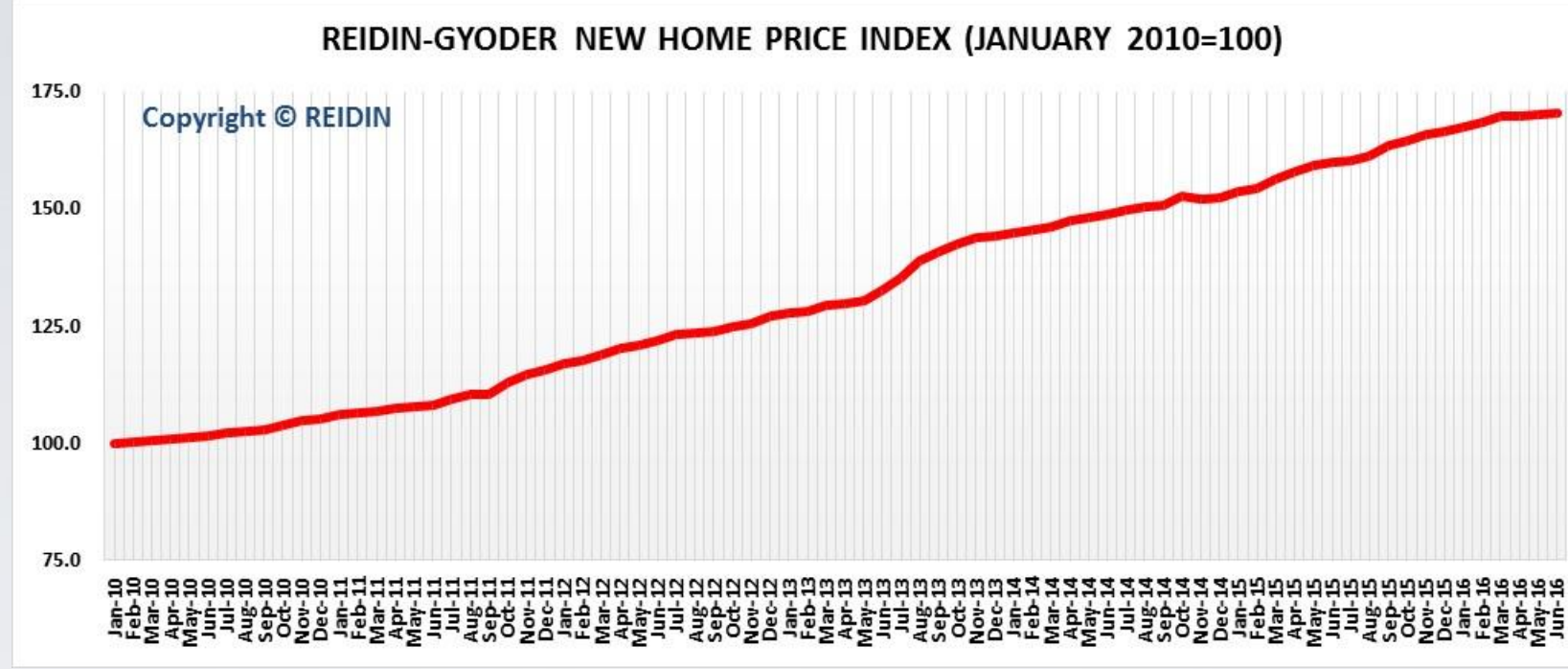
According to the results of REIDIN-GYODER New Home Price Index in June 2016 there is 0.12% increase with respect to the previous month and in compliance with June 2015 there is 6.57% increase.

According to the results of REIDIN-GYODER New Home Price Index in June 2016 "Branded Projects" in Istanbul Asian side shows 0.06% increase and 0.18% increase in European side.

According to the results of REIDIN-GYODER New Home Price Index in June 2016 there is an increase of 0.06% in 1+1 flat type; increase of 0.35% in 2+1 flat type; increase of 0.46% in 3+1 flat type and decrease of 0.27% in 4+1 flat type with respect to the previous month.

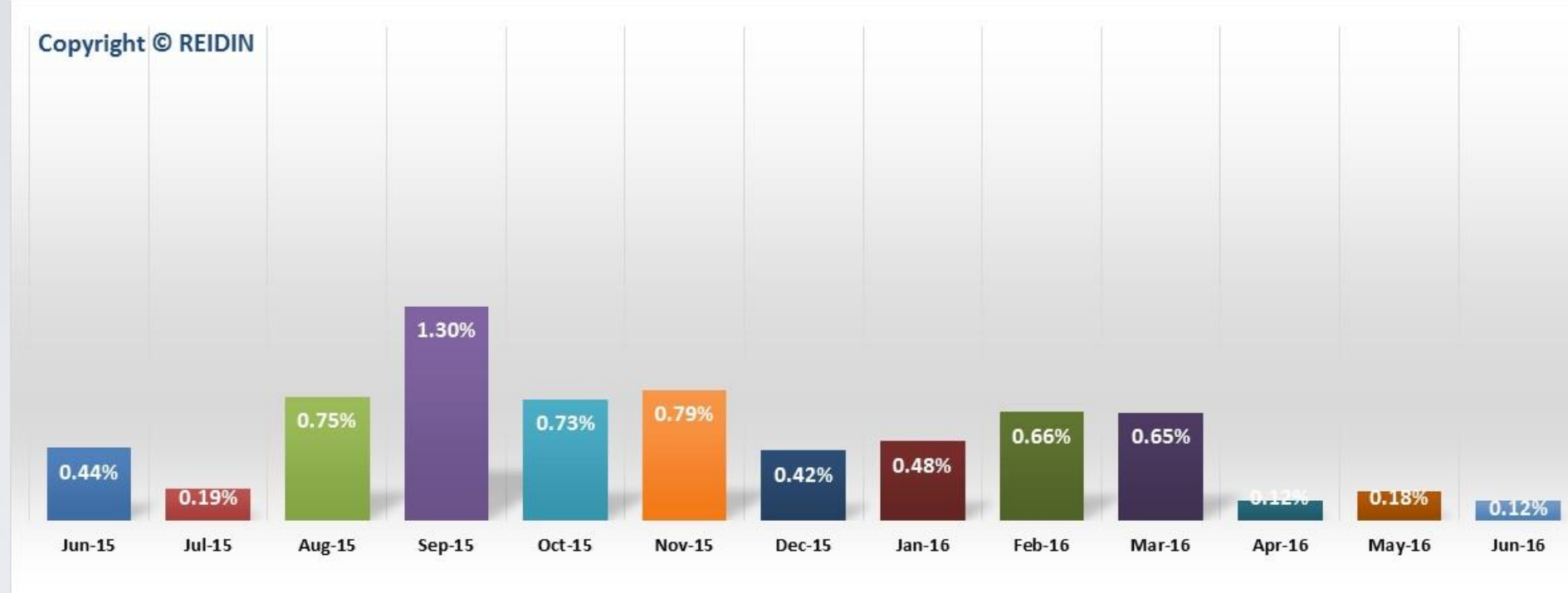
According to the results of REIDIN-GYODER New Home Price Index in June 2016 there is 0.06% increase in 51-75sqm size; 0.48% increase in 76-100sqm; 0.29% increase in 101-125sqm size; 0.35% increase in 126-150sqm and 0.20% decrease in 151sqm and bigger sized properties with respect to the previous month.

REIDIN-GYODER NEW HOME PRICE INDEX (JANUARY 2010=100)



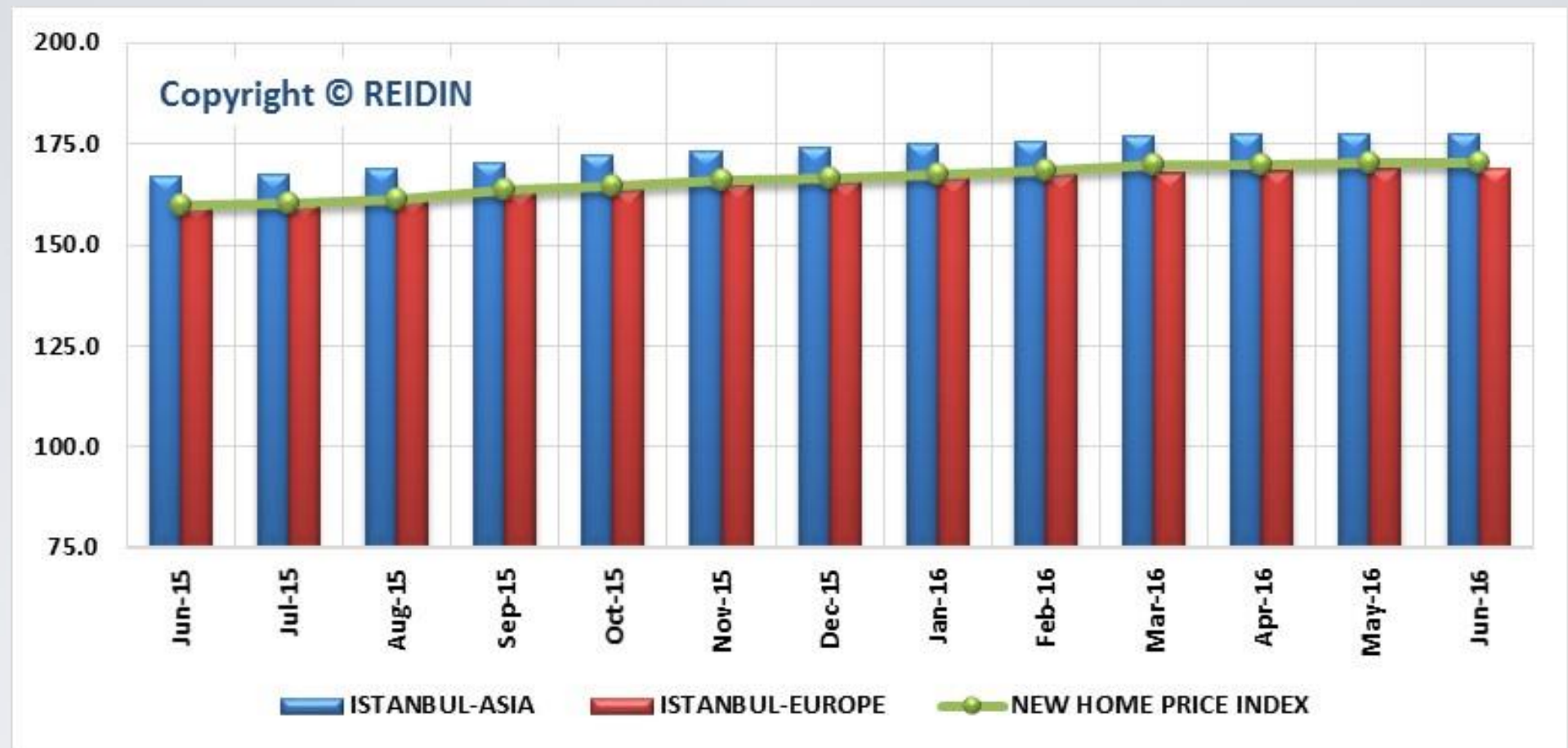
| | Index Value: June 2016 | % Change in Month | % Change in Past Year | % Change in Base Period |
|----------------|---------------------------|----------------------|--------------------------|----------------------------|
| New Home Index | 170.4 | 0.12% | 6.57% | 70.40% |

% CHANGE IN REIDIN-GYODER NEW HOME PRICE INDEX



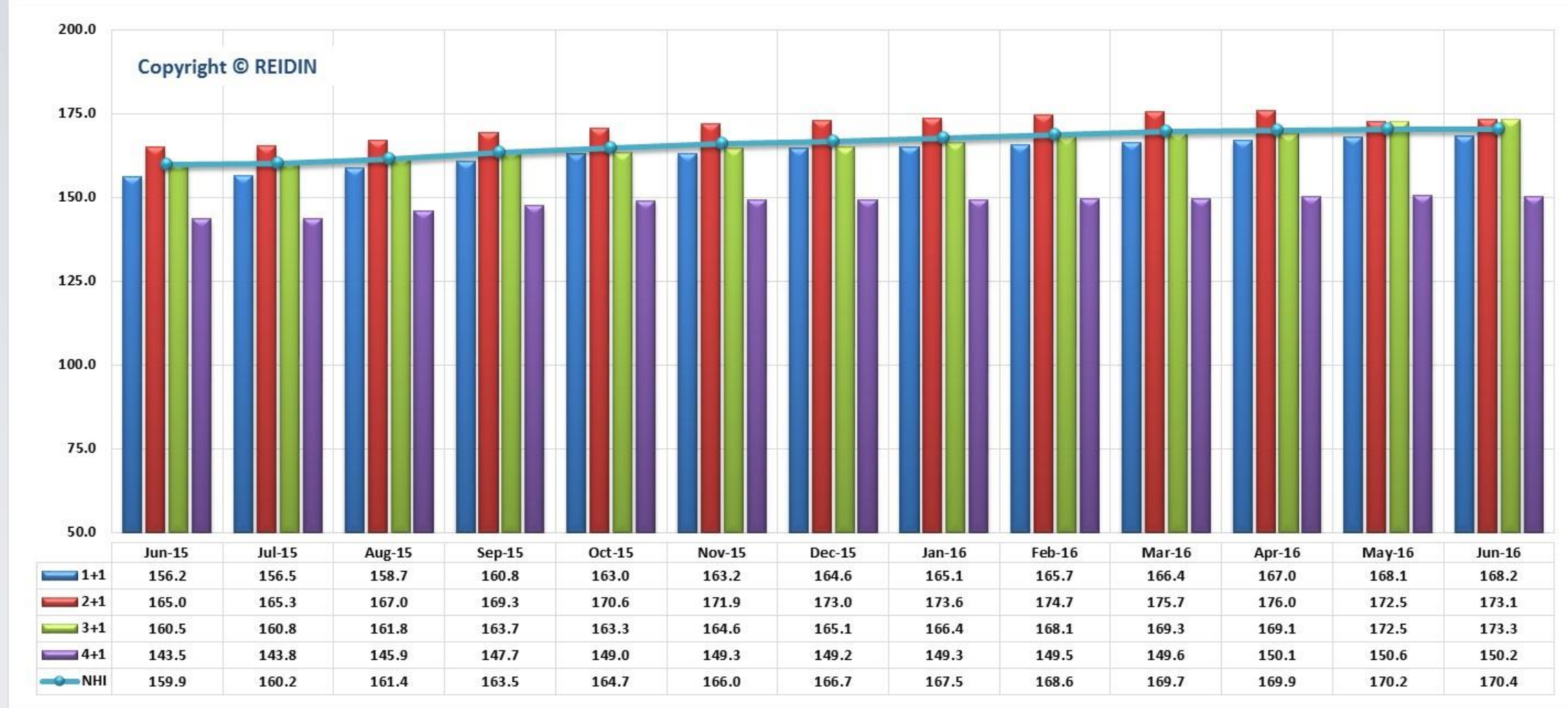
According to the results of REIDIN-GYODER New Home Price Index in June 2016 there is 0.12% increase with respect to the previous month and in compliance with June 2015 there is 6.57% increase.

REIDIN-GYODER NEW HOME PRICE INDEX: ISTANBUL ASIAN-EUROPEAN SIDE PROJECTS (JANUARY 2010=100)



According to the results of REIDIN-GYODER New Home Price Index in June 2016 "Branded Projects" in Istanbul Asian side shows 0.06% increase and 0.18% increase in European side.

TYPE OF HOUSES: NUMBER OF ROOMS (JANUARY 2010=100)



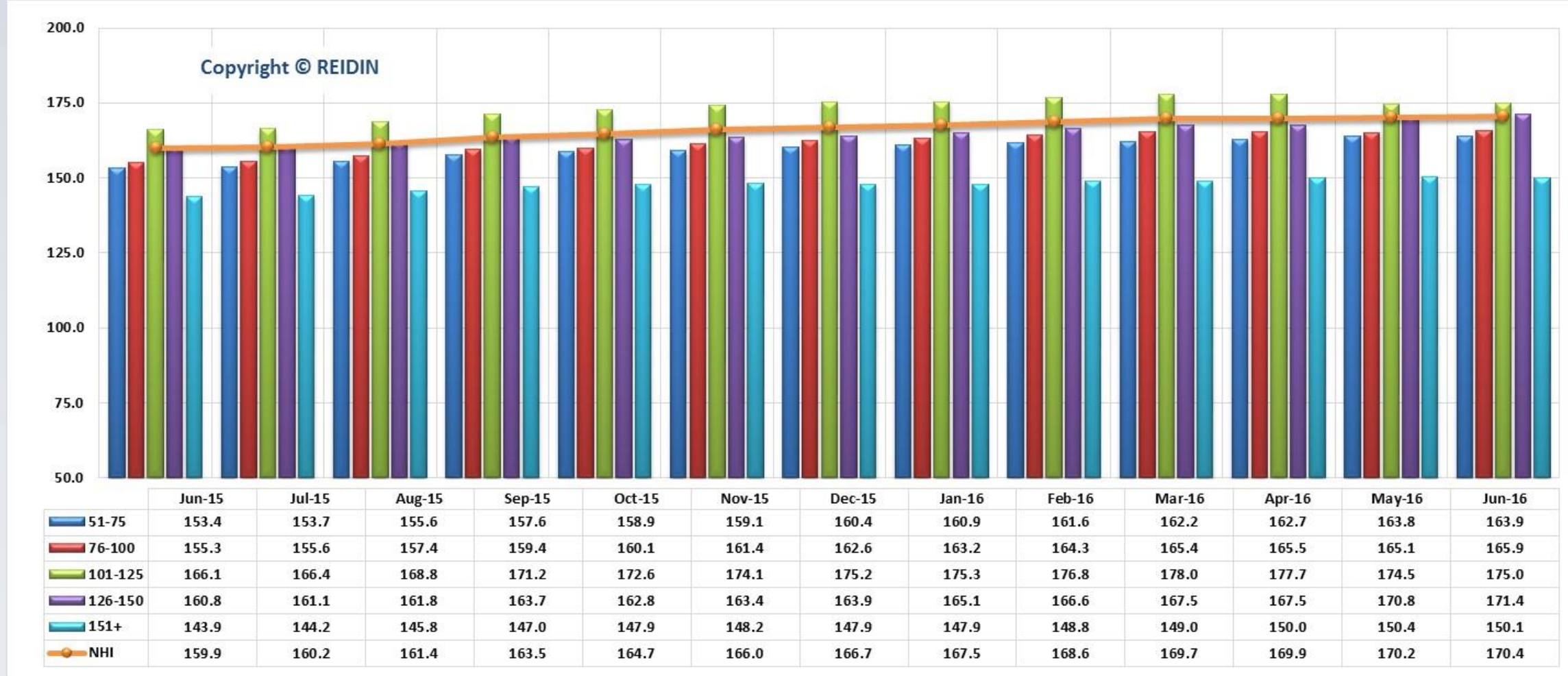
According to the results of REIDIN-GYODER New Home Price Index in June 2016 there is an increase of 0.06% in 1+1 flat type; increase of 0.35% in 2+1 flat type; increase of 0.46% in 3+1 flat type and decrease of 0.27% in 4+1 flat type with respect to the previous month.

TYPE OF HOUSES: NUMBER OF ROOMS

| Type of Houses | Index Value: June 2016 | % Change in Month | % Change in Past Year | % Change in Base Period |
|----------------|---------------------------|----------------------|--------------------------|----------------------------|
| New Home Index | 170.4 | 0.12% | 6.57% | 70.40% |
| 1+1 | 168.2 | 0.06% | 7.68% | 68.20% |
| 2+1 | 173.1 | 0.35% | 4.91% | 73.10% |
| 3+1 | 173.3 | 0.46% | 7.98% | 73.30% |
| 4+1 | 150.2 | -0.27% | 4.67% | 50.20% |

Base Period: January 2010=100

TYPE OF HOUSES: SIZE RANGE (JANUARY 2010=100)



According to the results of REIDIN-GYODER New Home Price Index in June 2016 there is 0.06% increase in 51-75sqm size; 0.48% increase in 76-100sqm; 0.29% increase in 101-125sqm size; 0.35% increase in 126-150sqm and 0.20% decrease in 151sqm and bigger sized properties with respect to the previous month.

TYPE OF HOUSES: SIZE RANGE

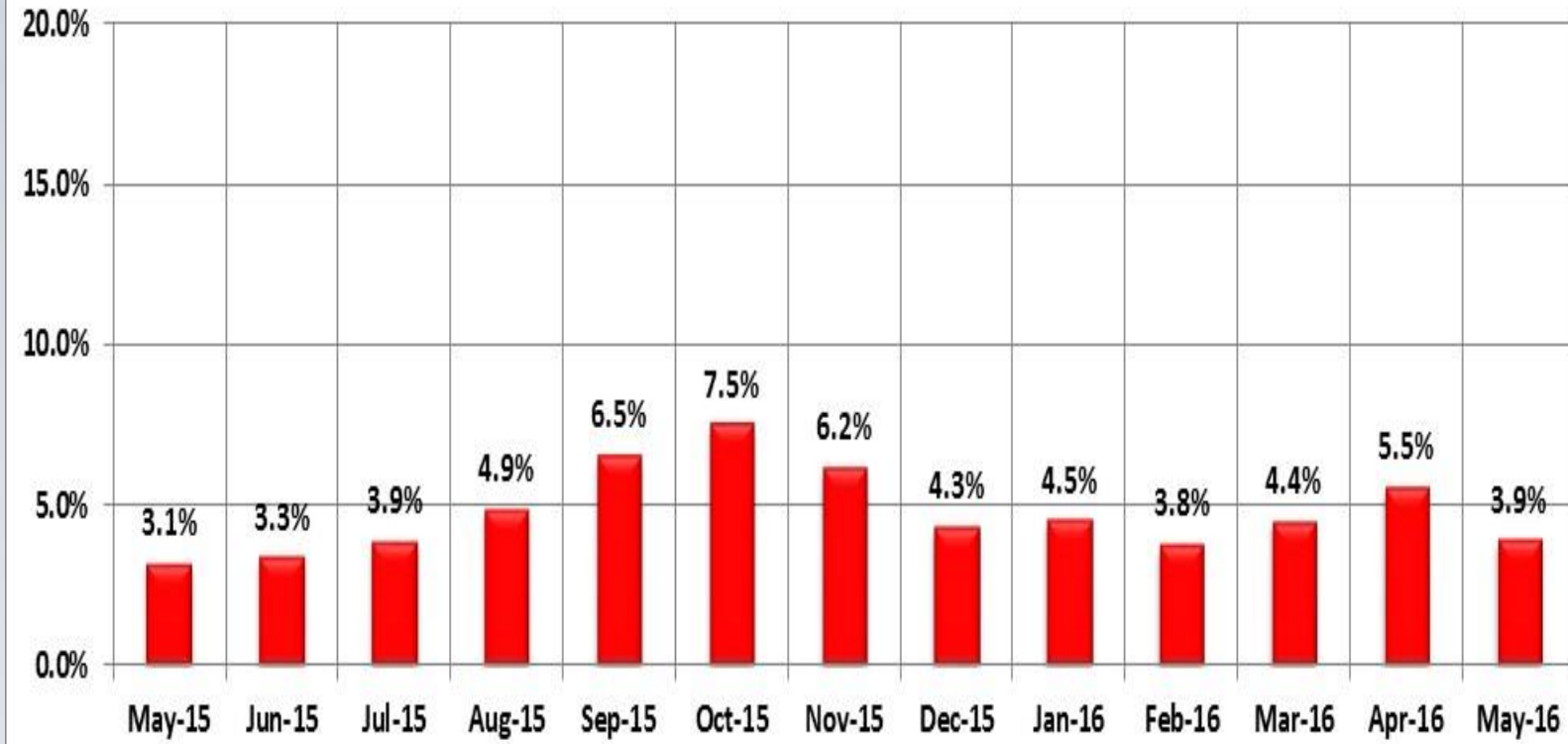
| Type of Houses | Index Value: June 2016 | % Change in Month | % Change in Past Year | % Change in Base Period |
|----------------|------------------------|-------------------|-----------------------|-------------------------|
| New Home Index | 170.4 | 0.12% | 6.57% | 70.40% |
| 51-75 SQM | 163.9 | 0.06% | 6.84% | 63.90% |
| 76-100 SQM | 165.9 | 0.48% | 6.83% | 65.90% |
| 101-125 SQM | 175.0 | 0.29% | 5.36% | 75.01% |
| 126-150 SQM | 171.4 | 0.35% | 6.59% | 71.40% |
| 151 SQM + | 150.1 | -0.20% | 4.31% | 50.10% |

Base Period: January 2010=100

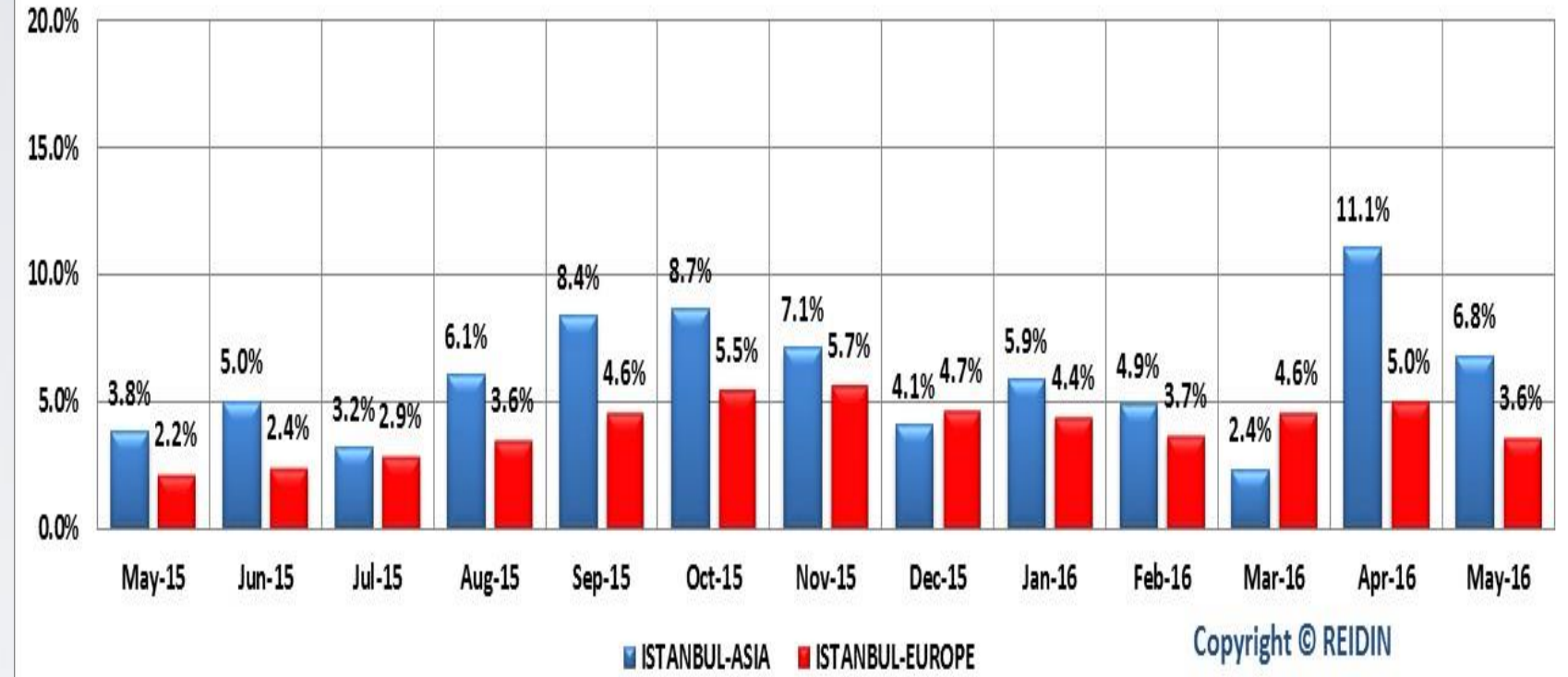
REIDIN-GYODER NEW HOUSING STOCK

Copyright © REIDIN

NET % CHANGE IN NEW HOUSING STOCK - OVERALL



NET % CHANGE IN NEW HOUSING STOCK - PROJECTS IN ASIA AND EUROPE



Copyright © REIDIN

Last month's data are provisional.

REIDIN-GYODER NEW HOME PRICE INDEX SUPPORTED BY İŞBANK

What is?

The monthly REIDIN-GYODER New Home Price Index, supported by İŞBANK, is developed from the properties of corporate real estate investment firms generally known as “Branded Projects”, and recently has been produced in many countries like USA, Australia, Canada.

Methodology

This monthly Index uses a “stratified median index” approach for index calculation—an approach that is widely used for indexing housing prices. Taken January 2010 (January 2010=100) as the base period, is calculated with the formula of Laspeyres.

Coverage

REIDIN-GYODER New Home Price Index is calculated on 70 projects and with a monthly average number of 22,500 properties presented by 29 developers.

PARTICIPANT DEVELOPERS

