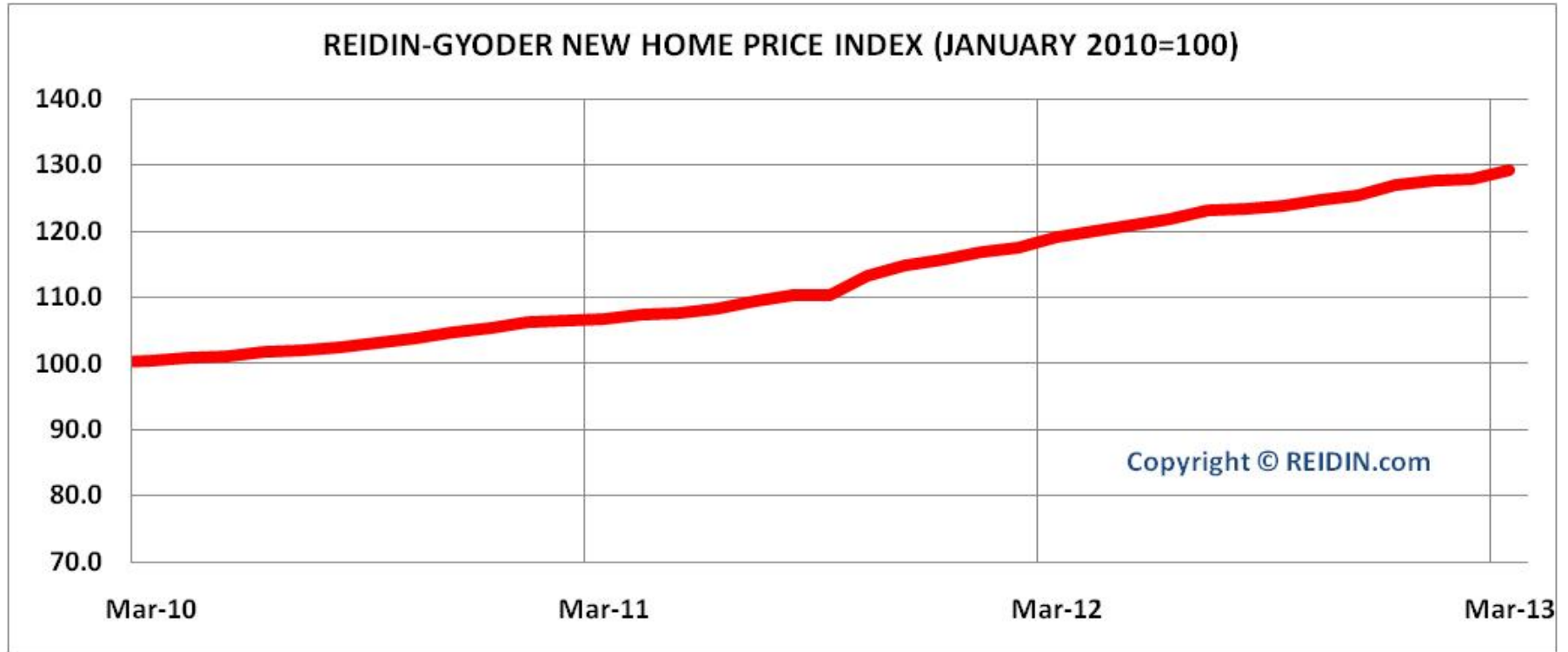


Vol.2 No.4

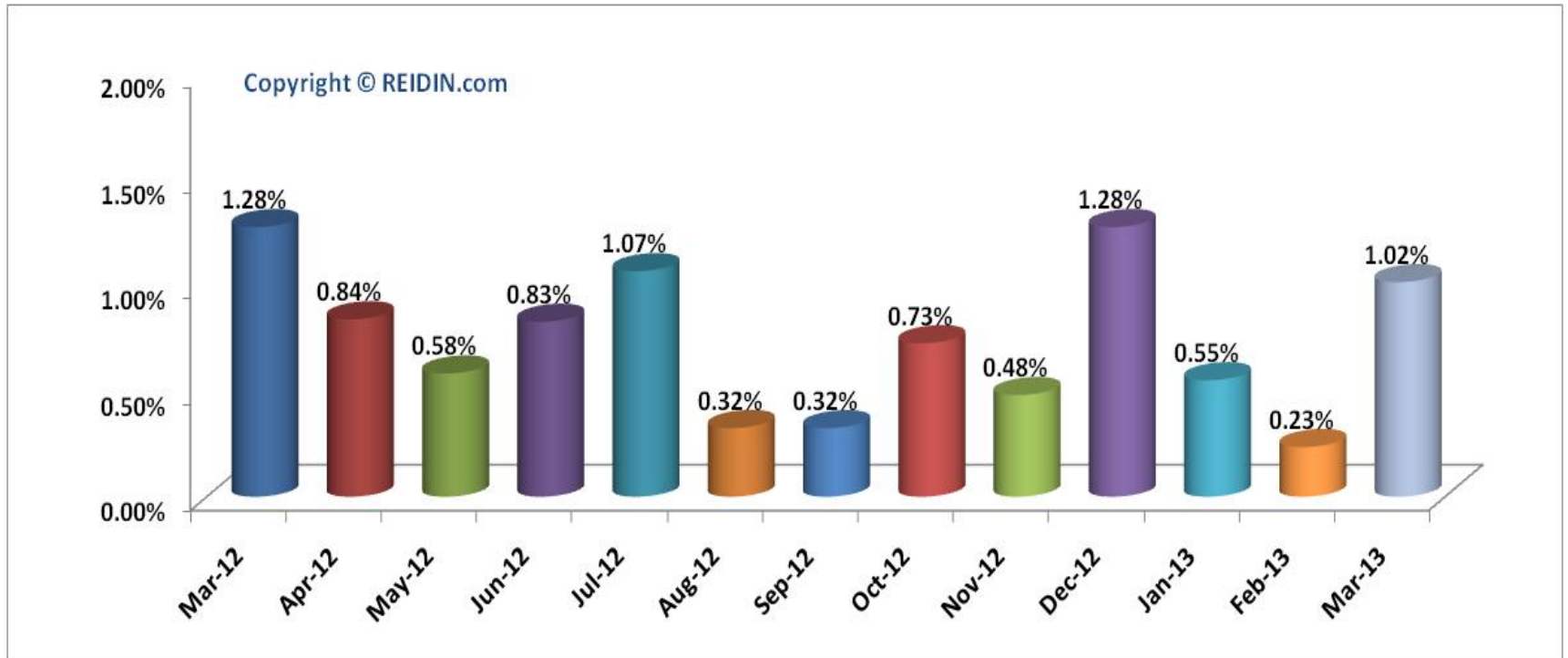
- According to the results of REIDIN-GYODER New Home Price Index, in March 2013 there is 1.02% increase with respect to the previous month and in compliance with March 2012 there is 8.56% increase.
- According to March 2013 results of REIDIN-GYODER New Home Price Index, “Trademarked Projects” in Istanbul European side shows 0.22% increase and 1.00% increase in Asian side.
- According to March 2013 results, REIDIN-GYODER New Home Price Index shows the increase of 0.08% in 1+1 flat type; increase of 0.99% in 2+1 flat type; increase of 1.11% in 3+1 flat type and increase of 1.52% in 4+1 flat type with respect to the previous month.
- According to March 2013 results, REIDIN-GYODER New Home Price Index reveals that there is 0.47% increase in 51-75sqm size; 0.57% increase in 76-100sqm; 0.62% increase in 101-125sqm size; 0.71% increase in 126-150sqm and 1.20% increase in 151sqm and bigger sized properties with respect to the previous month.

# REIDIN-GYODER NEW HOME PRICE INDEX (JAN.2010=100)



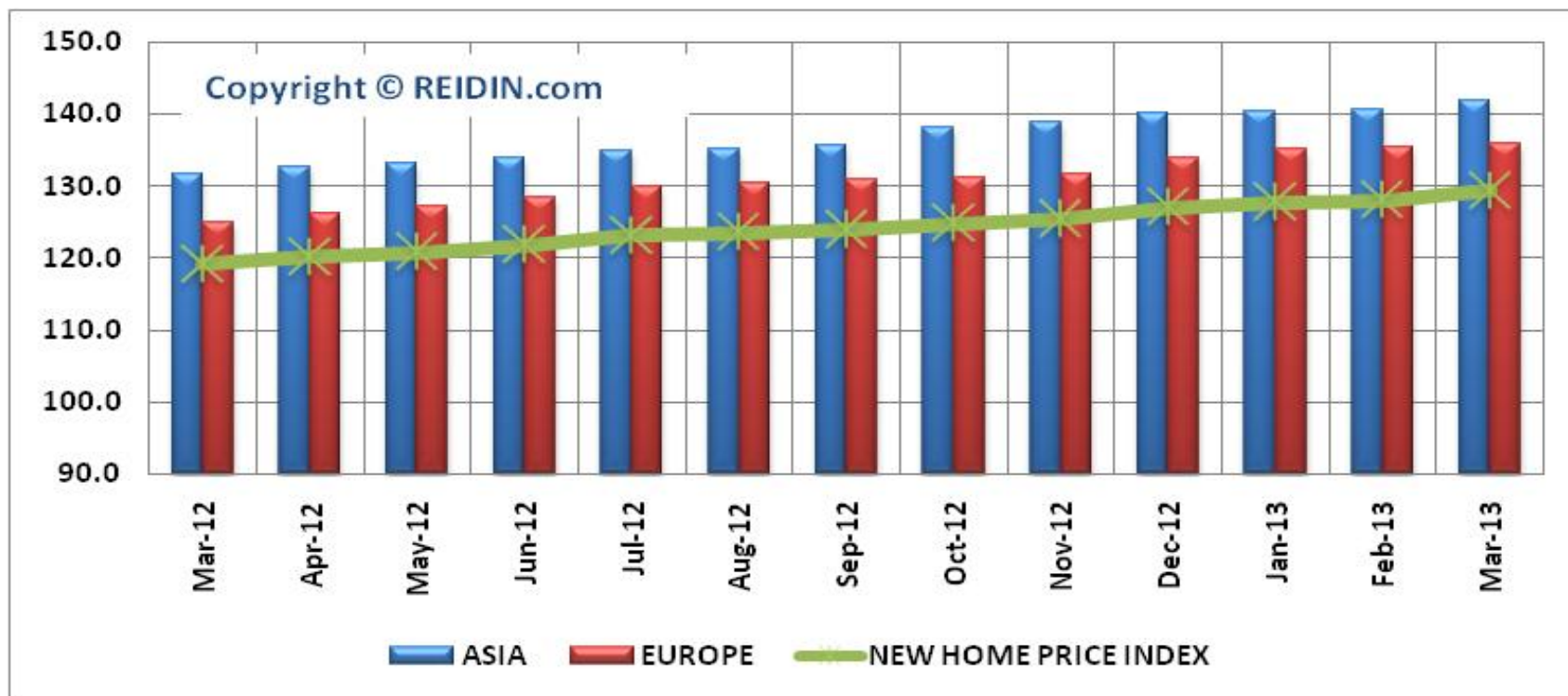
	Index Value: March 2013	% Change in Month	% Change in Past Year	% Change in Base Period
New Home Index	129.3	1.02%	8.56%	29.30%

# % CHANGE IN REIDIN-GYODER NEW HOME PRICE INDEX



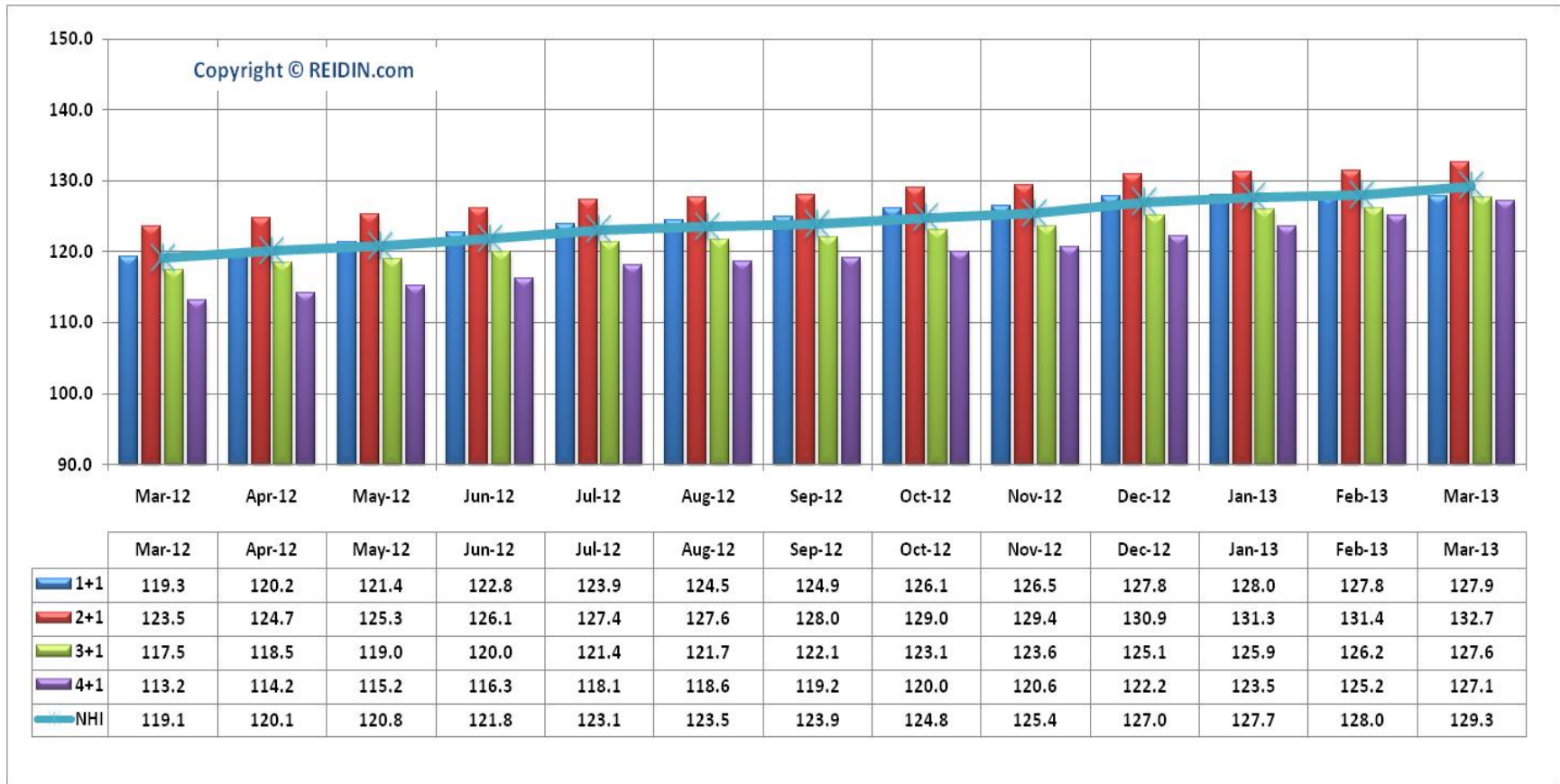
According to the results of REIDIN-GYODER New Home Price Index, in March 2013 there is 1.02% increase with respect to the previous month and in compliance with March 2012 there is 8.56% increase.

# REIDIN-GYODER NEW HOME PRICE INDEX: ISTANBUL ASIAN-EUROPEAN SIDE PROJECTS (JAN.2010=100)



According to March 2013 results of REIDIN-GYODER New Home Price Index, “Trademarked Projects” in Istanbul European side shows 0.22% increase and 1.00% increase in Asian side.

# TYPE OF HOUSES: NUMBER OF ROOMS (JAN.2010=100)



According to March 2013 results, REIDIN-GYODER New Home Price Index shows the increase of 0.08% in 1+1 flat type; increase of 0.99% in 2+1 flat type; increase of 1.11% in 3+1 flat type and increase of 1.52% in 4+1 flat type with respect to the previous month.

## TYPE OF HOUSES: NUMBER OF ROOMS

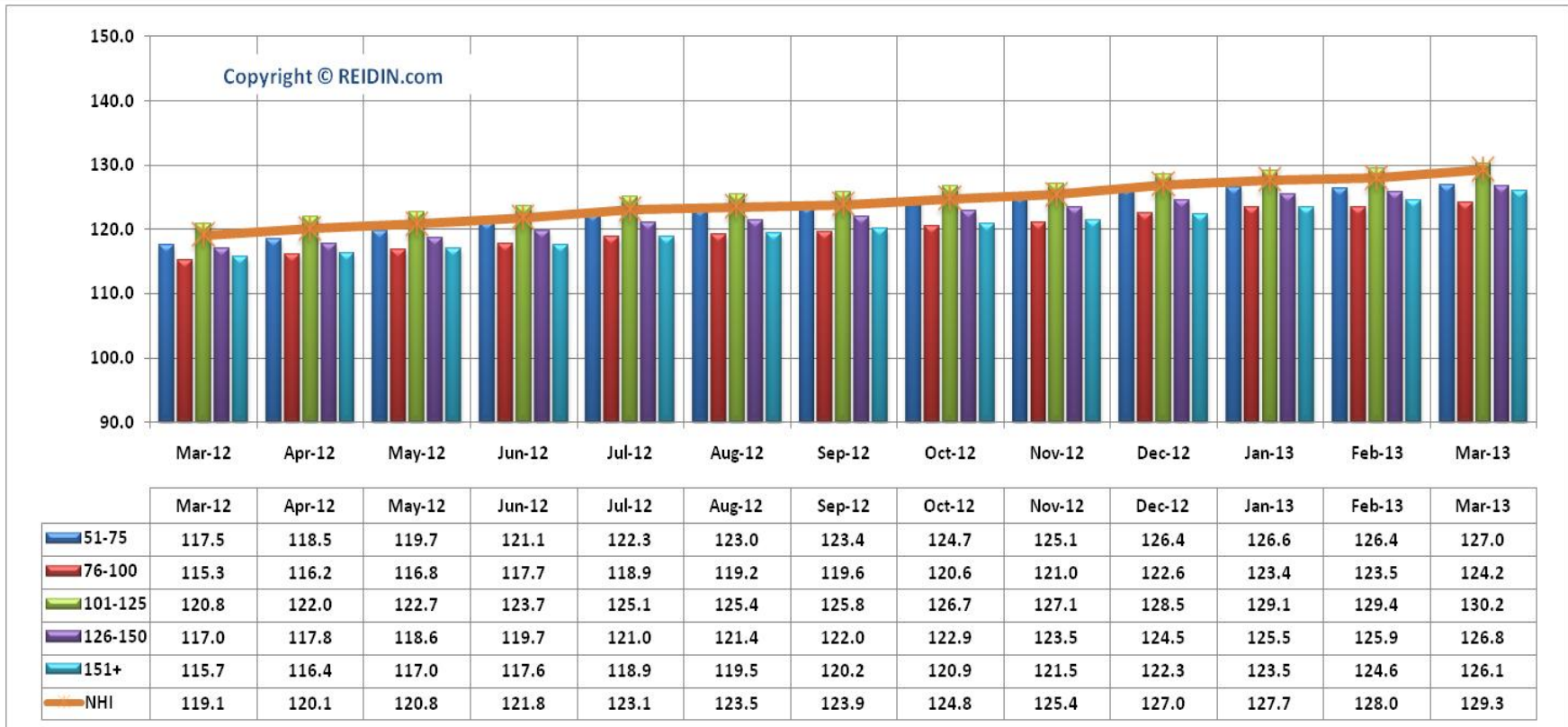
---

Type of Houses	Index Value: March 2013	% Change in Month	% Change in Past Year	% Change in Base Period
1+1	127.9	0.08%	7.21%	27.90%
2+1	132.7	0.99%	7.45%	32.70%
3+1	127.6	1.11%	8.60%	27.60%
4+1	127.1	1.52%	12.28%	27.10%

---

Base Period: January 2010=100

# TYPE OF HOUSES: SIZE RANGE (JAN.2010=100)



According to March 2013 results, REIDIN-GYODER New Home Price Index reveals that there is 0.47% increase in 51-75sqm size; 0.57% increase in 76-100sqm; 0.62% increase in 101-125sqm size; 0.71% increase in 126-150sqm and 1.20% increase in 151sqm and bigger sized properties with respect to the previous month.



## TYPE OF HOUSES: SIZE RANGE

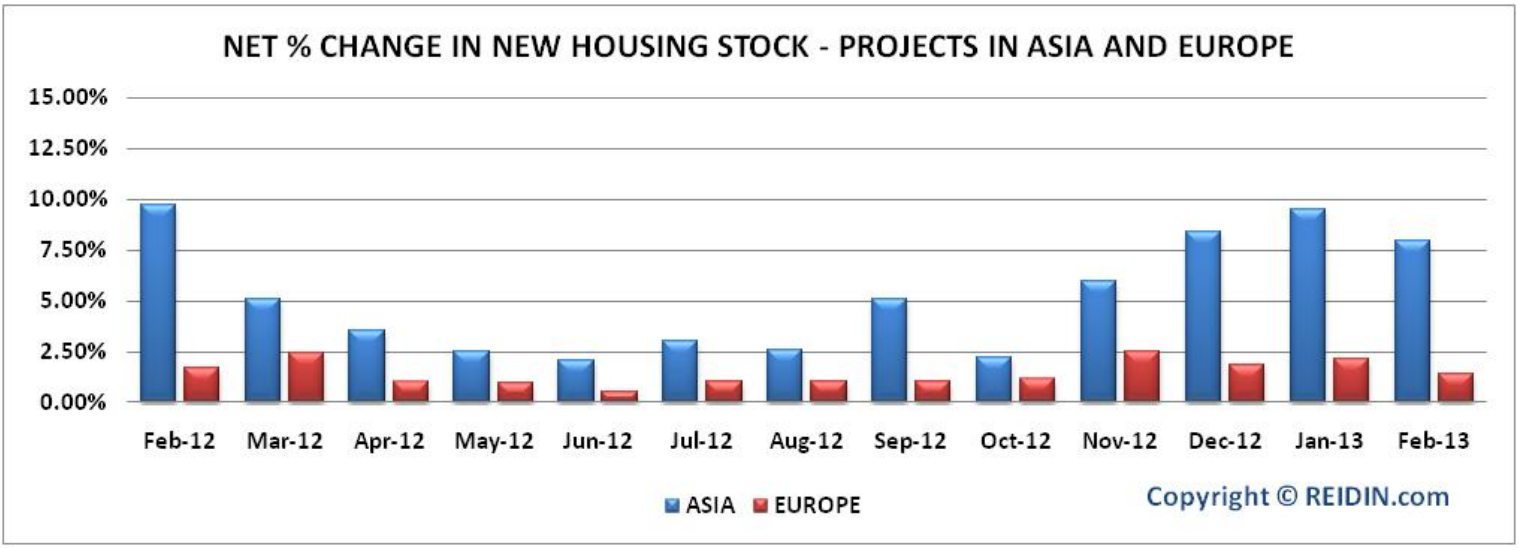
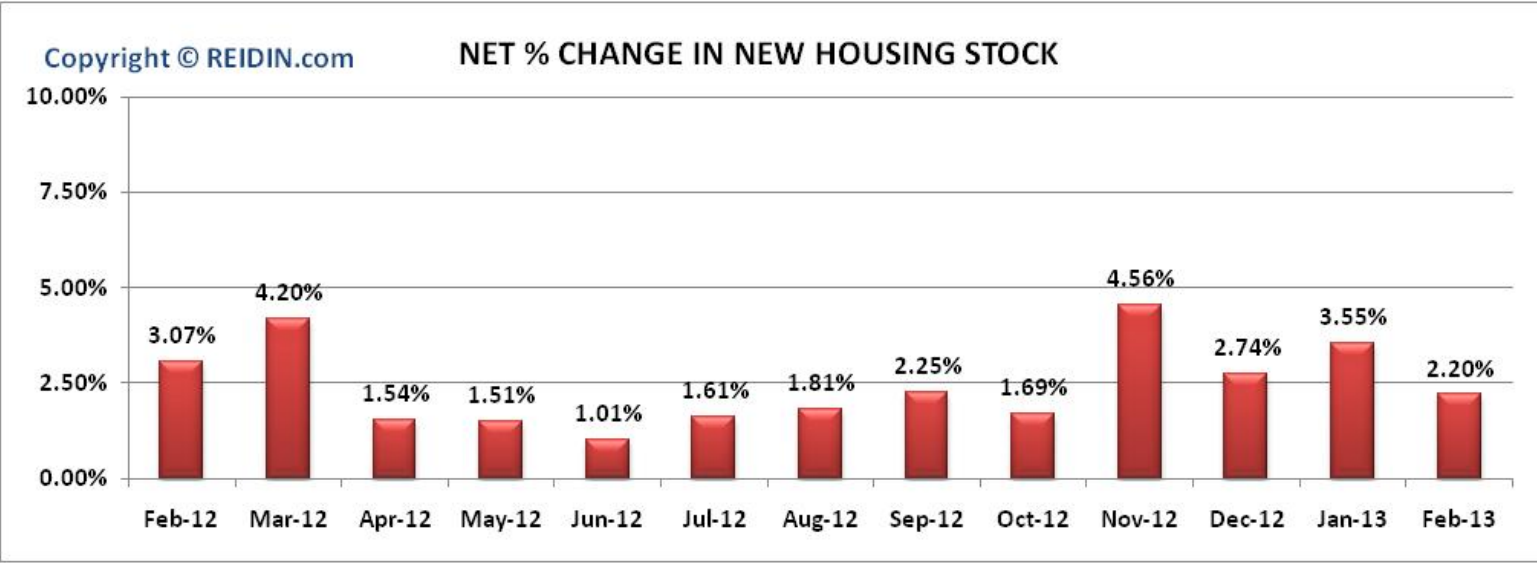
---

Type of Houses	Index Value: March 2013	% Change in Month	% Change in Past Year	% Change in Base Period
51-75 SQM	127.0	0.47%	8.09%	27.00%
76-100 SQM	124.2	0.57%	7.72%	24.20%
101-125 SQM	130.2	0.62%	7.78%	30.20%
126-150 SQM	126.8	0.71%	8.38%	26.80%
151 SQM +	126.1	1.20%	8.99%	26.10%

---

Base Period: January 2010=100

# REIDIN-GYODER NEW HOUSING STOCK



- **What is?**

It is the indicator index, which is developed from the properties of corporate real estate investment firms generally known as "Trademarked Projects", and recently has been produced in many countries like USA, Australia, Canada.

- **Methodology**

The monthly REIDIN-GYODER New Home Price Index uses a “stratified median index” approach for index calculation—an approach that is widely used for indexing housing prices. Taken January 2010 (January 2010=100) as the base period, is calculated with the formula of Laspeyres.

- **Coverage**

REIDIN-GYODER New Home Price Index is calculated on 65 projects and with a monthly average number of 22,500 properties presented by 24 developers.

# PARTICIPANT DEVELOPERS



BAYRAKTAR



DUMANKAYA



extensa.  
DYNAMIC REAL ESTATE

FER YAPI

Garanti Koza



KINAS  
"Yuva yapmak sanattır..."

nurol GYO

ÖZYAZICI

SİNPAŞ GYO

SİNPAŞ GAYRİMENKUL YATIRIM ORTAKLIĞI A.Ş.

SOYAK

KONUT | ENERJİ | CİMENTO | DÜKÜM



TEKFEN EMLAK GELİŞTİRME GRUBU



TEPE  
İNŞAAT

TSKB GYO

GAYRİMENKUL YATIRIM ORTAKLIĞI



TORUNLAR GYO

TURK MALL

yeşil GYO

YEŞİL GAYRİMENKUL YATIRIM ORTAKLIĞI A.Ş.

GYODER  
Gayrimenkul Yatırım Ortaklığı Derneği

REIDIN  
Emerging Markets  
Real Estate Information  
com

## – Indices

- REIDIN - GYODER New Home Price Index
- REIDIN - GYODER Office Index
- REIDIN - Residential Property Price Index (Sales and Rent)
- REIDIN - Housing Affordability Index
- REIDIN - Rental Affordability Index
- REIDIN - Gross Rental Yield Index

## – Modules

- REIDIN - Property Valuation Analysis Module
- REIDIN - Loan-to-Value Calculation Module
- REIDIN - Price-Rent Ratio Calculation Module

## **REIDIN.com - Istanbul Office**

**Avni Dilligil Sokak, C Blok, No: 7/13  
34360, Mecidiyeköy,  
Istanbul, Turkey**

**T: + 90 212 347 53 45**

**F: + 90 212 347 53 46**

**[www.reidin.com](http://www.reidin.com)**

**[info@reidin.com](mailto:info@reidin.com)**